

oria

DUBAI CREEK HARBOUR

FLOOR PLAN

FS
REAL ESTATE
STAY AHEAD, INVEST SMART

db
DUBRICKS
POSSIBILITIES ARE LIMITLESS

EMAAR

oria

DUBAI CREEK HARBOUR

1 BEDROOM

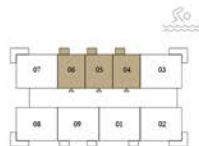
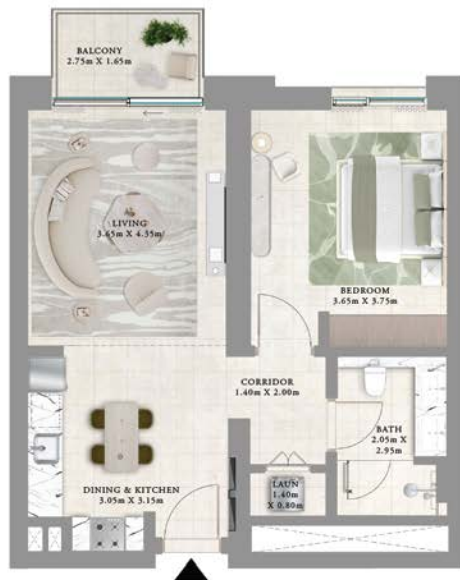
LEVELS 2-12 UNIT 04, 05 & 06

SUITE AREA	696.96 SQ.FT.	64.75 SQ.M.
BALCONY AREA	52.10 SQ.FT.	4.84 SQ.M.
TOTAL AREA	749.06 SQ.FT.	69.59 SQ.M.

KEY PLAN LEVEL

2-12

KEY SECTION



Disclaimer : All dimensions are in imperial and metric, and measured from finish to finish excluding construction tolerances. 2. All materials, dimensions, and drawings are approximate only. 3. Information is subject to change without notice, at developer's absolute discretion. 4. Actual area may vary from the stated area. 5. Drawings not to scale. 6. All images used are for illustrative purposes only and do not represent the actual size, features, specifications, fittings, and furnishings. 7. The developer reserves the right to make revisions / alterations, at it's absolute discretion, without any liability whatsoever.

EMAAR

oria

DUBAI CREEK HARBOUR

1 BEDROOM

LEVELS 13-20

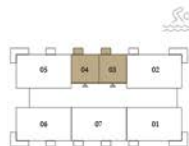
UNIT 03 & 04

SUITE AREA	698.36 SQ.FT.	64.88 SQ.M.
BALCONY AREA	51.99 SQ.FT.	4.83 SQ.M.
TOTAL AREA	750.35 SQ.FT.	69.71 SQ.M.

KEY PLAN LEVEL

13-20

KEY SECTION



Disclaimer : All dimensions are in imperial and metric, and measured from finish to finish excluding construction tolerances. 2. All materials, dimensions, and drawings are approximate only. 3. Information is subject to change without notice, at developer's absolute discretion. 4. Actual area may vary from the stated area. 5. Drawings not to scale. 6. All images used are for illustrative purposes only and do not represent the actual size, features, specifications, fittings, and furnishings. 7. The developer reserves the right to make revisions / alterations, at its absolute discretion, without any liability whatsoever.

EMAAR

oria

DUBAI CREEK HARBOUR

2 BEDROOMS

PODIUM 1

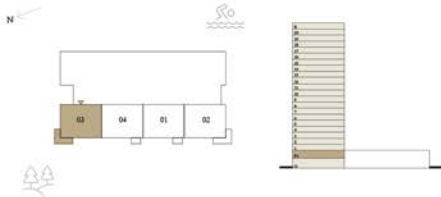
UNIT 03

SUITE AREA	1164.76 SQ.FT.	108.21 SQ.M.
BALCONY AREA	145.10 SQ.FT.	13.48 SQ.M.
TOTAL AREA	1309.86 SQ.FT.	121.69 SQ.M.

KEY PLAN LEVEL

PODIUM 1

KEY SECTION



Disclaimer : All dimensions are in imperial and metric, and measured from finish to finish excluding construction tolerances. 2. All materials, dimensions, and drawings are approximate only. 3. Information is subject to change without notice, at developer's absolute discretion. 4. Actual area may vary from the stated area. 5. Drawings not to scale. 6. All images used are for illustrative purposes only and do not represent the actual size, features, specifications, fittings, and furnishings. 7. The developer reserves the right to make revisions / alterations, at its absolute discretion, without any liability whatsoever.

EMAAR

oria

DUBAI CREEK HARBOUR

2 BEDROOMS

LEVEL 1

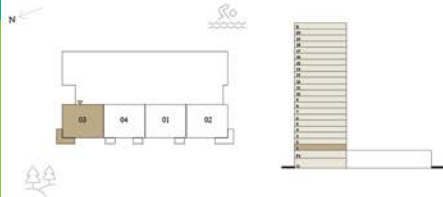
UNIT 03

SUITE AREA	1167.24 SQ.FT.	108.44 SQ.M.
BALCONY AREA	142.19 SQ.FT.	13.21 SQ.M.
TOTAL AREA	1309.43 SQ.FT.	121.65 SQ.M.

KEY PLAN LEVEL

1

KEY SECTION



Disclaimer : All dimensions are in imperial and metric, and measured from finish to finish excluding construction tolerances. 2. All materials, dimensions, and drawings are approximate only. 3. Information is subject to change without notice, at developer's absolute discretion. 4. Actual area may vary from the stated area. 5. Drawings not to scale. 6. All images used are for illustrative purposes only and do not represent the actual size, features, specifications, fittings, and furnishings. 7. The developer reserves the right to make revisions / alterations, at its absolute discretion, without any liability whatsoever.

EMAAR

oria

DUBAI CREEK HARBOUR

2 BEDROOMS

LEVELS 2-12

UNIT 08

SUITE AREA	1166.48 SQ.FT.	108.37 SQ.M.
BALCONY AREA	142.30 SQ.FT.	13.22 SQ.M.
TOTAL AREA	1308.78 SQ.FT.	121.59 SQ.M.

KEY PLAN LEVEL

2-12

KEY SECTION



Disclaimer : All dimensions are in imperial and metric, and measured from finish to finish excluding construction tolerances. 2. All materials, dimensions, and drawings are approximate only. 3. Information is subject to change without notice, at developer's absolute discretion. 4. Actual area may vary from the stated area. 5. Drawings not to scale. 6. All images used are for illustrative purposes only and do not represent the actual size, features, specifications, fittings, and furnishings. 7. The developer reserves the right to make revisions / alterations, at it's absolute discretion, without any liability whatsoever.

EMAAR

oria

DUBAI CREEK HARBOUR

2 BEDROOMS

PODIUM 1

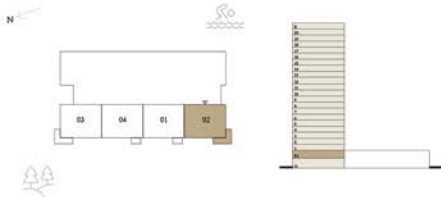
UNIT 02

SUITE AREA	1164.33 SQ.FT.	108.17 SQ.M.
BALCONY AREA	142.19 SQ.FT.	13.21 SQ.M.
TOTAL AREA	1306.52 SQ.FT.	121.38 SQ.M.

KEY PLAN LEVEL

PODIUM 1

KEY SECTION



Disclaimer : All dimensions are in imperial and metric, and measured from finish to finish excluding construction tolerances. 2. All materials, dimensions, and drawings are approximate only. 3. Information is subject to change without notice, at developer's absolute discretion. 4. Actual area may vary from the stated area. 5. Drawings not to scale. 6. All images used are for illustrative purposes only and do not represent the actual size, features, specifications, fittings, and furnishings. 7. The developer reserves the right to make revisions / alterations, at it's absolute discretion, without any liability whatsoever.

EMAAR

oria

DUBAI CREEK HARBOUR

2 BEDROOMS

LEVEL 1

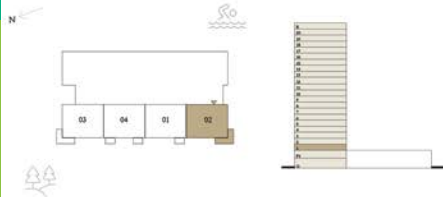
UNIT 02

SUITE AREA	1163.90 SQ.FT.	108.13 SQ.M.
BALCONY AREA	142.19 SQ.FT.	13.21 SQ.M.
TOTAL AREA	1306.09 SQ.FT.	121.34 SQ.M.

KEY PLAN LEVEL

1

KEY SECTION



Disclaimer : All dimensions are in imperial and metric, and measured from finish to finish excluding construction tolerances. 2. All materials, dimensions, and drawings are approximate only. 3. Information is subject to change without notice, at developer's absolute discretion. 4. Actual area may vary from the stated area. 5. Drawings not to scale. 6. All images used are for illustrative purposes only and do not represent the actual size, features, specifications, fittings, and furnishings. 7. The developer reserves the right to make revisions / alterations, at it's absolute discretion, without any liability whatsoever.

EMAAR

oria

DUBAI CREEK HARBOUR

2 BEDROOMS

LEVELS 2-12

UNIT 02

SUITE AREA	1163.69 SQ.FT.	108.11 SQ.M.
BALCONY AREA	142.30 SQ.FT.	13.22 SQ.M.
TOTAL AREA	1305.99 SQ.FT.	121.33 SQ.M.

KEY PLAN LEVEL

2-12

KEY SECTION



Disclaimer : All dimensions are in imperial and metric, and measured from finish to finish excluding construction tolerances. 2. All materials, dimensions, and drawings are approximate only. 3. Information is subject to change without notice, at developer's absolute discretion. 4. Actual area may vary from the stated area. 5. Drawings not to scale. 6. All images used are for illustrative purposes only and do not represent the actual size, features, specifications, fittings, and furnishings. 7. The developer reserves the right to make revisions / alterations, at it's absolute discretion, without any liability whatsoever.

EMAAR

oria

DUBAI CREEK HARBOUR

2 BEDROOMS

LEVELS 2-12

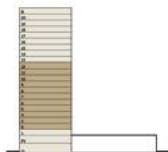
UNIT 03

SUITE AREA	1157.44 SQ.FT.	107.53 SQ.M.
BALCONY AREA	142.30 SQ.FT.	13.22 SQ.M.
TOTAL AREA	1299.74 SQ.FT.	120.75 SQ.M.

KEY PLAN LEVEL

2-12

KEY SECTION



Disclaimer : All dimensions are in imperial and metric, and measured from finish to finish excluding construction tolerances. 2. All materials, dimensions, and drawings are approximate only. 3. Information is subject to change without notice, at developer's absolute discretion. 4. Actual area may vary from the stated area. 5. Drawings not to scale. 6. All images used are for illustrative purposes only and do not represent the actual size, features, specifications, fittings, and furnishings. 7. The developer reserves the right to make revisions / alterations, at its absolute discretion, without any liability whatsoever.

EMAAR

oria

DUBAI CREEK HARBOUR

2 BEDROOMS

LEVELS 2-12

UNIT 07

SUITE AREA	1157.77 SQ.FT.	107.56 SQ.M.
BALCONY AREA	142.30 SQ.FT.	13.22 SQ.M.
TOTAL AREA	1300.07 SQ.FT.	120.78 SQ.M.

KEY PLAN LEVEL

2-12

KEY SECTION



Disclaimer : All dimensions are in imperial and metric, and measured from finish to finish excluding construction tolerances. 2. All materials, dimensions, and drawings are approximate only. 3. Information is subject to change without notice, at developer's absolute discretion. 4. Actual area may vary from the stated area. 5. Drawings not to scale. 6. All images used are for illustrative purposes only and do not represent the actual size, features, specifications, fittings, and furnishings. 7. The developer reserves the right to make revisions / alterations, at it's absolute discretion, without any liability whatsoever.

EMAAR

oria

DUBAI CREEK HARBOUR

2 BEDROOMS

LEVEL 1

UNIT 04

SUITE AREA	1169.18 SQ.FT.	108.62 SQ.M.
BALCONY AREA	103.76 SQ.FT.	9.64 SQ.M.
TOTAL AREA	1272.94 SQ.FT.	118.26 SQ.M.

KEY PLAN LEVEL

1

KEY SECTION



Disclaimer : All dimensions are in imperial and metric, and measured from finish to finish excluding construction tolerances. 2. All materials, dimensions, and drawings are approximate only. 3. Information is subject to change without notice, at developer's absolute discretion. 4. Actual area may vary from the stated area. 5. Drawings not to scale. 6. All images used are for illustrative purposes only and do not represent the actual size, features, specifications, fittings, and furnishings. 7. The developer reserves the right to make revisions / alterations, at it's absolute discretion, without any liability whatsoever.

EMAAR

oria

DUBAI CREEK HARBOUR

2 BEDROOMS

LEVELS 2-12

UNIT 09

SUITE AREA	1168.75 SQ.FT.	108.58 SQ.M.
BALCONY AREA	104.19 SQ.FT.	9.68 SQ.M.
TOTAL AREA	1272.94 SQ.FT.	118.26 SQ.M.

KEY PLAN LEVEL

2-12

KEY SECTION



Disclaimer : All dimensions are in imperial and metric, and measured from finish to finish excluding construction tolerances. 2. All materials, dimensions, and drawings are approximate only. 3. Information is subject to change without notice, at developer's absolute discretion. 4. Actual area may vary from the stated area. 5. Drawings not to scale. 6. All images used are for illustrative purposes only and do not represent the actual size, features, specifications, fittings, and furnishings. 7. The developer reserves the right to make revisions / alterations, at its absolute discretion, without any liability whatsoever.

EMAAR

oria

DUBAI CREEK HARBOUR

2 BEDROOMS

PODIUM 1 UNIT 01

SUITE AREA	1171.87 SQ.FT.	108.87 SQ.M.
BALCONY AREA	52.10 SQ.FT.	4.84 SQ.M.
TOTAL AREA	1223.97 SQ.FT.	113.71 SQ.M.

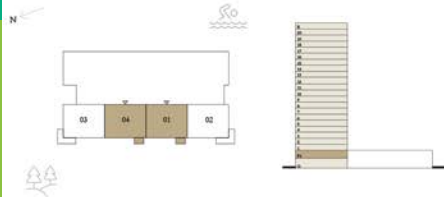
PODIUM 1 UNIT 04

SUITE AREA	1170.58 SQ.FT.	108.75 SQ.M.
BALCONY AREA	51.88 SQ.FT.	4.82 SQ.M.
TOTAL AREA	1222.46 SQ.FT.	113.57 SQ.M.

KEY PLAN LEVEL

KEY SECTION

PODIUM 1



Disclaimer : All dimensions are in imperial and metric, and measured from finish to finish excluding construction tolerances. 2. All materials, dimensions, and drawings are approximate only. 3. Information is subject to change without notice, at developer's absolute discretion. 4. Actual area may vary from the stated area. 5. Drawings not to scale. 6. All images used are for illustrative purposes only and do not represent the actual size, features, specifications, fittings, and furnishings. 7. The developer reserves the right to make revisions / alterations, at it's absolute discretion, without any liability whatsoever.

EMAAR

oria

DUBAI CREEK HARBOUR

2 BEDROOMS

LEVEL 1

UNIT 01

SUITE AREA	1171.11 SQ.FT.	108.80 SQ.M.
BALCONY AREA	51.88 SQ.FT.	4.82 SQ.M.
TOTAL AREA	1222.99 SQ.FT.	113.62 SQ.M.

KEY PLAN LEVEL

1

KEY SECTION



Disclaimer : All dimensions are in imperial and metric, and measured from finish to finish excluding construction tolerances. 2. All materials, dimensions, and drawings are approximate only. 3. Information is subject to change without notice, at developer's absolute discretion. 4. Actual area may vary from the stated area. 5. Drawings not to scale. 6. All images used are for illustrative purposes only and do not represent the actual size, features, specifications, fittings, and furnishings. 7. The developer reserves the right to make revisions / alterations, at its absolute discretion, without any liability whatsoever.

EMAAR

oria

DUBAI CREEK HARBOUR

2 BEDROOMS

LEVELS 2-12

UNIT 01

SUITE AREA	1170.90 SQ.FT.	108.78 SQ.M.
BALCONY AREA	52.10 SQ.FT.	4.84 SQ.M.
TOTAL AREA	1223.00 SQ.FT.	113.62 SQ.M.

KEY PLAN LEVEL

2-12

KEY SECTION



Disclaimer : All dimensions are in imperial and metric, and measured from finish to finish excluding construction tolerances. 2. All materials, dimensions, and drawings are approximate only. 3. Information is subject to change without notice, at developer's absolute discretion. 4. Actual area may vary from the stated area. 5. Drawings not to scale. 6. All images used are for illustrative purposes only and do not represent the actual size, features, specifications, fittings, and furnishings. 7. The developer reserves the right to make revisions / alterations, at its absolute discretion, without any liability whatsoever.

EMAAR

oria

DUBAI CREEK HARBOUR

3 BEDROOMS

LEVELS 13-20

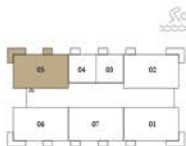
UNIT 05

SUITE AREA	1523.63 SQ.FT.	141.55 SQ.M.
BALCONY AREA	194.40 SQ.FT.	18.06 SQ.M.
TOTAL AREA	1718.03 SQ.FT.	159.61 SQ.M.

KEY PLAN LEVEL

13-20

KEY SECTION



Disclaimer : All dimensions are in imperial and metric, and measured from finish to finish excluding construction tolerances. 2. All materials, dimensions, and drawings are approximate only. 3. Information is subject to change without notice, at developer's absolute discretion. 4. Actual area may vary from the stated area. 5. Drawings not to scale. 6. All images used are for illustrative purposes only and do not represent the actual size, features, specifications, fittings, and furnishings. 7. The developer reserves the right to make revisions / alterations, at its absolute discretion, without any liability whatsoever.

EMAAR

oria

DUBAI CREEK HARBOUR

3 BEDROOMS

LEVELS 13-20

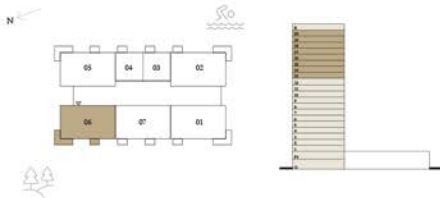
UNIT 06

SUITE AREA	1532.35 SQ.FT.	142.36 SQ.M.
BALCONY AREA	194.40 SQ.FT.	18.06 SQ.M.
TOTAL AREA	1726.75 SQ.FT.	160.42 SQ.M.

KEY PLAN LEVEL

13-20

KEY SECTION



Disclaimer : All dimensions are in imperial and metric, and measured from finish to finish excluding construction tolerances. 2. All materials, dimensions, and drawings are approximate only. 3. Information is subject to change without notice, at developer's absolute discretion. 4. Actual area may vary from the stated area. 5. Drawings not to scale. 6. All images used are for illustrative purposes only and do not represent the actual size, features, specifications, fittings, and furnishings. 7. The developer reserves the right to make revisions / alterations, at its absolute discretion, without any liability whatsoever.

EMAAR

oria

DUBAI CREEK HARBOUR

3 BEDROOMS

LEVELS 13-20

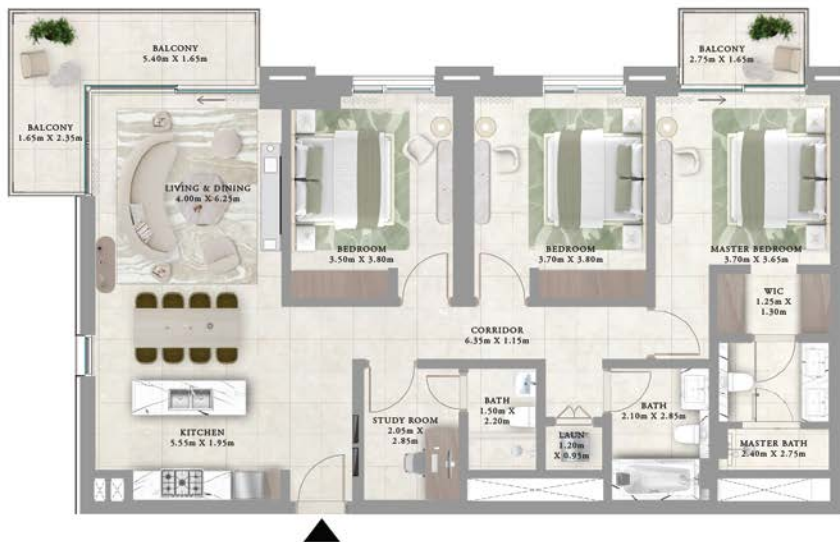
UNIT 01

SUITE AREA	1530.31 SQ.FT.	142.17 SQ.M.
BALCONY AREA	194.29 SQ.FT.	18.05 SQ.M.
TOTAL AREA	1724.60 SQ.FT.	160.22 SQ.M.

KEY PLAN LEVEL

13-20

KEY SECTION



Disclaimer : All dimensions are in imperial and metric, and measured from finish to finish excluding construction tolerances. 2. All materials, dimensions, and drawings are approximate only. 3. Information is subject to change without notice, at developer's absolute discretion. 4. Actual area may vary from the stated area. 5. Drawings not to scale. 6. All images used are for illustrative purposes only and do not represent the actual size, features, specifications, fittings, and furnishings. 7. The developer reserves the right to make revisions / alterations, at its absolute discretion, without any liability whatsoever.

EMAAR

oria

DUBAI CREEK HARBOUR

3 BEDROOMS

LEVELS 13-20

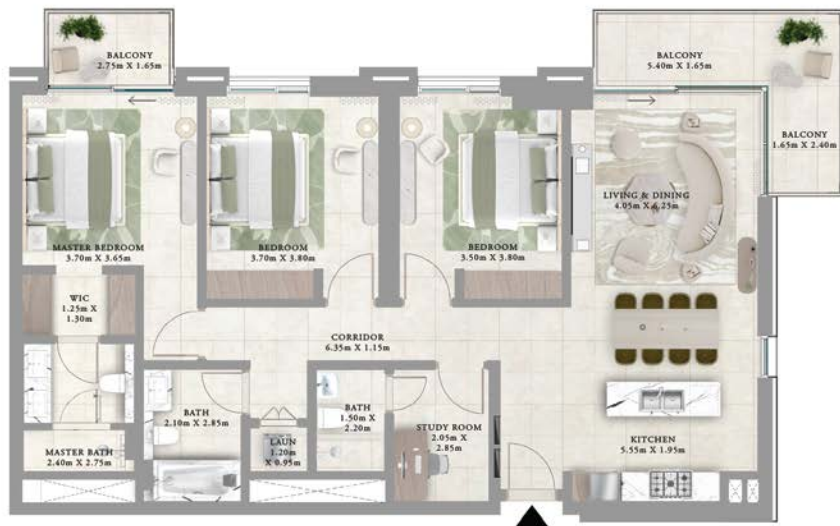
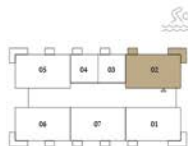
UNIT 02

SUITE AREA	1522.88 SQ.FT.	141.48 SQ.M.
BALCONY AREA	194.29 SQ.FT.	18.05 SQ.M.
TOTAL AREA	1717.17 SQ.FT.	159.53 SQ.M.

KEY PLAN LEVEL

13-20

KEY SECTION



Disclaimer : All dimensions are in imperial and metric, and measured from finish to finish excluding construction tolerances. 2. All materials, dimensions, and drawings are approximate only. 3. Information is subject to change without notice, at developer's absolute discretion. 4. Actual area may vary from the stated area. 5. Drawings not to scale. 6. All images used are for illustrative purposes only and do not represent the actual size, features, specifications, fittings, and furnishings. 7. The developer reserves the right to make revisions / alterations, at its absolute discretion, without any liability whatsoever.

EMAAR

oria

DUBAI CREEK HARBOUR

3 BEDROOMS

LEVELS 13-20

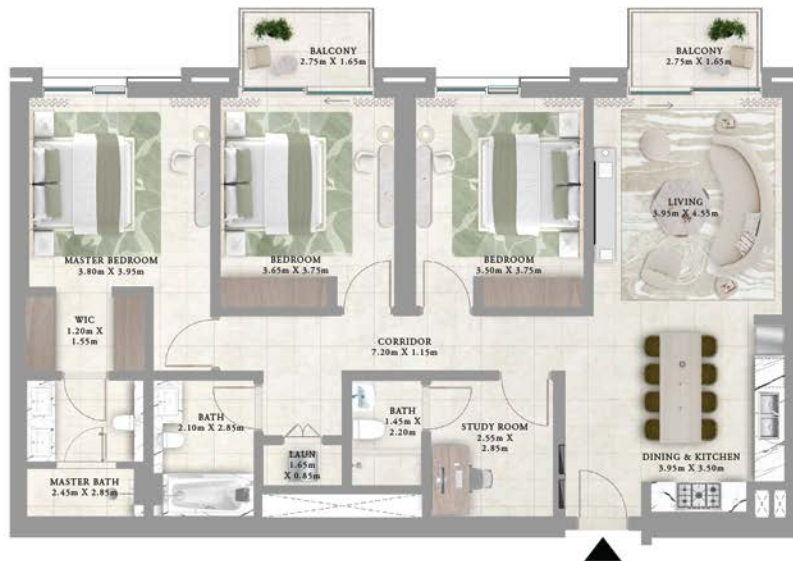
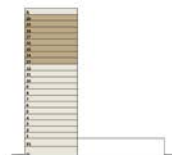
UNIT 07

SUITE AREA	1554.95 SQ.FT.	144.46 SQ.M.
BALCONY AREA	103.98 SQ.FT.	9.66 SQ.M.
TOTAL AREA	1658.93 SQ.FT.	154.12 SQ.M.

KEY PLAN LEVEL

13-20

KEY SECTION



Disclaimer : All dimensions are in imperial and metric, and measured from finish to finish excluding construction tolerances. 2. All materials, dimensions, and drawings are approximate only. 3. Information is subject to change without notice, at developer's absolute discretion. 4. Actual area may vary from the stated area. 5. Drawings not to scale. 6. All images used are for illustrative purposes only and do not represent the actual size, features, specifications, fittings, and furnishings. The developer reserves the right to make revisions / alterations, at its absolute discretion, without any liability whatsoever.

EMAAL

oria

AI CREEK HARBOUR
DUB

FOR MORE INFORMATION PLEASE CONTACT



REAL ESTATE
STAY AHEAD, INVEST SMART

☎ +971 55 476 7630
☎ +971 4 368 7878
✉ info@afsrealestate.com
🌐 www.afsrealestate.com



DUBRICKS
POSSIBILITIES ARE LIMITLESS

☎ +971 50 674 2020
☎ +971 4 368 7878
✉ info@dubricks.com
🌐 www.dubricks.com

EMAAR